

AIM® Service Using the
Sprint PCS Network



AIM® Service Using the Sprint PCS Network

Table of Contents

▶ Getting Started	4
▶ Select links on your phone	4
▶ Start the AOL Instant Messenger service	4
▶ Signing On and Off	5
▶ Sign on to the AIM service	5
▶ Sign off the AIM service	7
▶ About the main AIM screen	5
▶ Using the Buddy List Feature On Your Phone	8
▶ About the Mobile Device group	8
▶ About the Mobile Device icon	8
▶ Add screen names to your Buddy List feature	9
▶ Update the Buddy List feature	9
▶ Delete screen names from your Buddy List feature	9
▶ Sending and Receiving Messages	10
▶ Send a new message	10
▶ Compose a message	10
▶ Receive a new message	11
▶ Reply to a message	11
▶ Manage conversations	12
▶ View your messages.....	12
▶ Reject messages.....	12
▶ End the conversation.....	12
▶ Rejecting Messages	13
▶ Reject messages from an AIM user in your Buddy List feature.....	13
▶ Accept messages from a rejected AIM user.....	13
▶ Setting Alerts	14
▶ Buddy alerts	14
▶ Message alerts	14
▶ Disable alerts	14
▶ Changing Your Password	15
▶ Using T9 Text Input to Type Messages	16
▶ How T9 Text Input works	16
▶ Enter letters using T9 Text Input.....	16
▶ Use multi-tap text input.....	17
▶ Troubleshooting	18

© Copyright 2002 by America Online, Inc. All Rights Reserved.

AOL, AIM, Buddy List, T9 and the AOL triangle design are registered trademarks of America Online, Inc. Instant Messenger is a trademark of America Online, Inc.

T9 Text Input is licensed under one or more of the following: U.S. Pat. Nos. 5,818,437, 5,953,541, 5,187,480, 5,945,928, and 6,011,554, and 6,307,548; Australian Pat. No. 727539; Canadian Pat. No. 1,331,057; United Kingdom Pat. No. 2238414B; Hong Kong Standard Pat. No. HK0940329; Republic of Singapore Pat. No. 51383; Euro.Pat. No. 0 842 463 (96927260.8) DE/DK, FI, FR, IT,NL,PT.ES,SE,GB; Republic of Korea Pat. Nos. KR201211B1 and KR226206B1; and additional patents are pending worldwide.

Getting Started

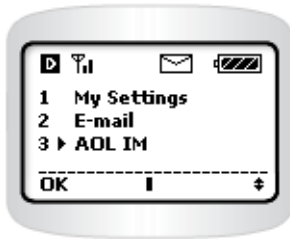
Use this guide to learn how to send and receive instant messages using the AOL® Instant Messenger service from your Sprint Wireless Web phone.

Here's what you need:

- **An AIM-compatible screen name.** This can be an AOL, CompuServe 2000®, Netscape®, or AIM® screen name. If you have a screen name, you are ready to begin.
If you do not have an AIM-compatible screen name, browse to <http://www.aol.com/aim> and get one now.
- **A Sprint Web-enabled phone.**
- **Sprint PCS Wireless Web service.**

Select links on your phone

Use the menu system on your phone to locate the AIM screens:



Select links to access the options you want to use.

If the menu options are numbered, just press the number for the option on your keypad.

Use the phone's softkeys to select different options as you navigate the links.

Do the following to select and open Wireless Web links:

- Navigate to the link you want as documented for your specific phone. For example, you can use the scroll buttons or a joystick (if your phone has this). Then, press the softkey for the action you want to take.
- Alternatively, if the menu options are numbered, press the number key for the menu option you want.

Start the AOL Instant Messenger service

1. Navigate to your phone's Web browser, as documented for your phone.
2. Scroll to **Messaging** and press the **OK** softkey.
3. Scroll to **AOL IM** and press the **OK** softkey.

When you connect to the AIM service, the AOL Instant Messenger screen displays.



Do any of the following actions:

- Select **Sign On** to sign on to the AIM service.
- Select **AOL** to connect to the AOL portal.
- Press the **About** softkey for Help.

4. Sign on to the AIM service using your screen name and password. See "Sign on to the AIM service" [on page 5](#) for more information.

Signing On and Off

Before you can sign on, you must have an AIM-compatible screen name. Signing on to the AIM service will affect any other AIM session that you may have started using the same screen name. For instance:

- You can sign on to both the AOL and AIM services with the same screen name. However, any messages you receive will be displayed by the AOL desktop service.
- When using the AIM service or AIM Express service, signing on to one device will sign you off a session on another device. For example, if you use the AIM service on your computer, and then sign on with the same screen name on your phone, the AIM session on your computer will be signed off.

Sign on to the AIM service

To sign on to the AIM service, complete the following steps:

1. From the AOL Instant Messenger screen, select **Sign On** and press the **OK** softkey.
2. Type your screen name and press the **OK** softkey. The screen name is not case-sensitive.
3. Type your password and press the **OK** softkey. Your password is case-sensitive, so make sure to use the appropriate mode while typing.

The AIM service does not save your name and password, but the Web browser may save the screen name and password until you turn off the phone.

When you connect to the AIM service, the main AIM screen displays. If you are signing on for the first time from your phone, you'll get a message saying that the AIM service is creating a *Mobile Device group* in your Buddy List feature. This Mobile Device group contains up to 30 screen names for you to use from your phone. For more information on using the Mobile Device group and the Buddy List feature, see "Using T9 Text Input to Type Messages" [on page 16](#).

About the main AIM screen

After you sign on, the main AIM screen displays your current conversations, and the online and offline screen names from your Buddy List feature, and you can access a menu of options for using the service. This screen is updated every time you sign on, update the lists, or refresh the browser.



The main AIM screen shows your active conversations, and your online and offline buddies.

Note: If you use the AIM service on your computer, your entire Buddy List feature is not downloaded to your phone. Instead, the first time you sign on to the AIM service from your phone, a Mobile Device group is created and 30 screen names from your Buddy List feature are moved into this group. Think of the Mobile Device group as your Buddy List feature that you use from your phone. For more information, see "Using the Buddy List Feature On Your Phone" [on page 8](#).

The Conversations list

The Conversations list displays your current AIM conversations. This list is empty when your first sign on, but will show a list of your active conversations as soon as you update the list, or send or receive a message. An asterisk (*) next to a screen name indicates that you have a new message from that buddy.

Select a screen name in this list and press the **VIEW** softkey to see new messages or to send new messages to the screen name.

The Online Buddies list

The Online Buddies list shows the screen names from your Buddy List feature that are signed on to the AIM service. Select a screen name in this list and press the **SEND** softkey to send this person a message.

The Offline Buddies list

When a buddy goes offline, the screen name moves to the Offline Buddies list the next time you get new messages or update the list.

When you add a screen name to your Buddy List feature, it is initially displayed at the end of the Offline Buddies list. To update the list, select **Get New/Update List** from the List Menu.

Screen name symbols

On the main AIM screen, the screen names are displayed in a bulleted list using a period (.) as the default symbol. Any symbols next to the screen names in the Conversations, the Online Buddies, and the Offline Buddies lists indicate their status.

- * **New Message.** A new message has been received from this screen name.
- ! **Alert.** You will be notified when this screen name signs on.
- = **Away.** This screen name is Away and unavailable for messages.
- ? **Uncertain.** This screen name may be offline.
- X **Rejected.** You have declined messages from this screen name.

The List Menu

The List Menu appears as the **MENU** softkey option on the main AIM screen. Use this menu to access options such as getting new messages, adding new screen names to your Buddy List, or changing your status. If you have a screen name selected on the main AIM screen (before you select the List Menu), these menu options may change to be targeted to actions that you can perform on that specific screen name.

To get online help, press the **INFO** softkey. In addition to accessing Help from the List menu, you can obtain online help by pressing and holding the Menu key. This will connect you with the Browser menu. Select **Help** and press the **OK** softkey.



Use the List Menu to access options like Add Buddy, Send Message to a Buddy, or Update Buddy List.

*Press the **INFO** softkey to get AIM online help.*

Sign off the AIM service

Once you have signed on, the AIM service remains active—even if the browser is not being used or the phone is turned off—until you select **Sign off** from the List Menu, or if the AIM service automatically terminates your session after 26 hours of inactivity. In this way, you can continue to receive messages while performing other activities with the phone.

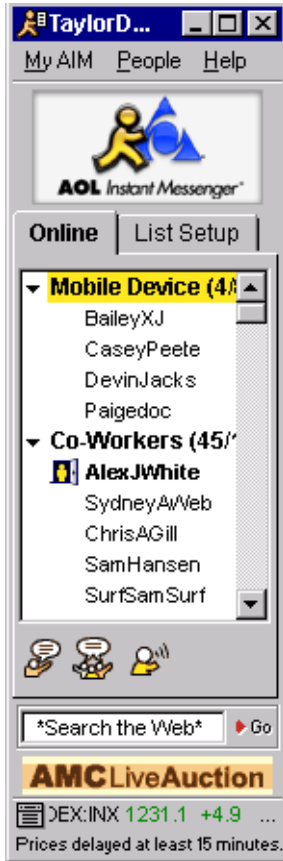
When you are done using the AIM service, it is best to sign off so other AIM users know you are offline. If you do not sign off, your screen name continues to appear as being online to other AIM users.

To sign off, complete the following steps:

1. From the main AIM screen, press the **MENU** softkey.
2. Select **Sign off** and press the **OK** softkey.
3. At the confirmation message, press the **YES** softkey. When you sign off the AIM service, all current conversations are ended.

Note: Be sure to turn off your phone to prevent others from using your screen name. Even if you have signed off the AIM service, your screen name and password may remain active on the phone, providing access to your AIM service if anyone else uses your phone.

Using the Buddy List Feature On Your Phone



If you use the AIM or AOL service on your desktop computer, you know that the Buddy List feature is a window that displays the AOL Instant Messenger screen names for your friends, family members, and co-workers.

Regardless of how you access the AIM service, your Buddy List is available to you. For example, you can access your Buddy List from a variety of products, including the AOL desktop application, the AIM service for your computer, the AIM Express service on the Web, and on wireless devices, such as wireless phones and PDAs. With the Buddy List, you can maintain groups of friends, family, co-workers, and others to communicate with anytime, anywhere. Whenever these buddies sign on, their screen names appear as active in your Buddy List window, allowing you to communicate with them instantly.

On your phone, the **Online Buddies** and **Offline Buddies** lists on the main AIM screen display the status for your AIM buddies. Your Online Buddies and Offline Buddies lists are updated every time you sign on, update the list, or refresh the browser. The symbols preceding a screen name indicate the screen name's status. For a description of these symbols, see "Screen name symbols" [on page 6](#).

About the Mobile Device group

On your computer, groups are used to organize the screen names in your Buddy List feature; for example, Friends, Family, and Co-Workers are the default groups in the Buddy List window.

When you use the AIM service with a wireless phone, a special category called the *Mobile Device group* is created in the Buddy List you access from your computer. This group is created the first time you sign on to the AIM service from your phone. This Mobile Device group can hold up to 30 screen names for you to use when instant messaging from your phone.

Just as you group the screen names in your Buddy List feature into categories like Buddies, Family, or Co-Workers, the Mobile Device group is a group for your screen names that you converse with when you're on a phone or other wireless device.

About the Mobile Device icon

When you connect to the AIM service from your phone, anyone who is using AIM version 4.8.2646 or higher, or AOL version 7.0 or later, will see a Mobile Device icon appear next to your screen name both in their Buddy List window and in the Instant Messaging window.

The Mobile Device icon lets others know that you are viewing and writing messages using a wireless phone. Your friends will then understand that it may take you longer to type messages, or that your messages may be shorter and use more shorthand language or abbreviations.

Disabling the Mobile Device icon

If you are an AOL member and you do not want the Mobile Device icon to appear, you can disable it from the AOL 7.0 Buddy List window. Click **Setup, Preferences**, and then in the Buddy List tab uncheck the box labeled "**Allow other members to see that I am using a mobile device.**"

If you are using the AIM desktop client version 4.8.2591 or higher, select **MyAIM, Edit Options**, and then **Edit Preferences**. Then, select the Privacy category and uncheck the box labeled "**Allow other members to see that I am using a mobile device.**"

Add screen names to your Buddy List feature

To add a screen name to the Buddy List, complete the following steps:

1. From the main AIM screen, press the **MENU** softkey.
2. Select **Add Name to Buddy List** and press the **OK** softkey. (Make sure you don't have a specific screen name selected.)
3. Enter the screen name and press the **OK** softkey.

Note: The AIM service ignores spaces in screen names. Therefore, when you are typing a screen name that is a compound word such as "SpaceCadet" or "iscreamdog" using T9 Text Input, just press the RIGHT ARROW to insert a space between the words instead of compounding the word. The screen name will display as "Space Cadet" or "i scream dog." The AIM service will ignore the spaces and interpret the screen name correctly.

Update the Buddy List feature

After you add a name to your list, the list displays the new name at the end of the Offline Buddies list. Press the **MENU** softkey and then select **Get New/Update List** to display the screen name's current status.

Delete screen names from your Buddy List feature

To delete a screen name from the Buddy List, complete the following steps:

1. From the main AIM screen, select the screen name and then press the **MENU** softkey.
2. Select **Delete Buddy** and press the **OK** softkey to delete the screen name.

Note: If there is an open conversation with the screen name that you selected to delete, you may have to end the conversation before you are able to delete it. To end the conversation, select the screen name in the Conversations list, press the **MENU** softkey, and then select **End Conversation**.

Sending and Receiving Messages

While signed on to the AIM service you can easily switch between messaging, talking, and performing other activities with your phone. To make a phone call or use other functions of the phone, exit the Web browser as documented for your phone—you'll stay signed on to the AIM service. To return to the AIM session, just navigate to the **AOL IM** option.

Send a new message

When you first sign on to the AIM service, there are no active conversations. You can send new messages to screen names in your Online Buddies list or to any AIM screen name.

For help entering text on your phone, see "Using T9 Text Input to Type Messages" [on page 16](#).

Sending messages to an online buddy

1. From the main AIM screen, select the screen name and press the **SEND** softkey.
2. Your friend's screen name is shown at the beginning of the conversation. Press the **REPLY** softkey and type your message.
3. Press the **SEND** softkey.
Your message is saved under the screen name and indicated by the "<" character.
4. You can type another message to the screen name by pressing the **REPLY** softkey, or select **Quick Reply** and press the **QUICK** softkey to use a predefined message. To return to the Conversations menu, press the **MENU** softkey.

See "Using Quick Replies" [on page 11](#) for more information on using Quick Replies.

Sending messages to any AIM screen name

Use this option to send messages to AIM users who are not saved in your Buddy List feature.

1. From the main AIM screen, press the **MENU** softkey, and then select **Send Msg to ...** and press the **OK** softkey.
2. Enter the screen name and press the **OK** softkey.
3. Press the **REPLY** softkey and type your message.
4. Press the **SEND** softkey.
Your message is saved under the screen name and indicated by the "<" character.
5. You can type another message, or select **Quick Reply** and press the **QUICK** softkey to use a predefined message. To return to the main AIM screen, press the **MENU** softkey and then press **AIM**.

See "Using Quick Replies" [on page 11](#) for more information on using Quick Replies.

Compose a message

Your friend's screen name is shown at the beginning of the conversation. There are two ways that you can enter messages:

- Type your message using the phone's keypad
- Use Quick Replies

Typing messages using your phone's keypad

The available text input modes include the following:

- Multi-tap (usually indicated as abc/ABC)
- T9® Text Input (also known as Predictive Text Input or iTap)
- Symbols (usually indicated as SYM)
- Numbers (usually indicated as 123)

Select the appropriate input mode before you start typing. Most phones default to the multi-tap mode. For typing text messages, T9 Text Input is twice as fast as multi-tapping. To correct errors, press the **Clear** or **Back** key.

For information on using T9 Text Input, see "Using T9 Text Input to Type Messages" [on page 16](#).

Using Quick Replies

Quick Replies are a collection of smileys, greetings and common phrases that you can use to coordinate activities with other people. Use this feature to easily send messages with minimal typing. After you select a Quick Reply, you can add additional text to the message.

To use a Quick Reply, complete the following steps:

1. Create a new message or reply to a message sent to you.
2. Select **Quick Reply** and press the **QUICK** softkey.
3. Select the type of Quick Reply you want. The Quick Reply options include smileys, simple greetings, and common phrases used to coordinate activities with other people.

After you choose a Quick Reply, you can continue typing additional text.

4. When your message is ready, press the **SEND** softkey. If you chose a Smiley, your friends using the AIM service on a phone see the emoticon exactly as you typed it; any friends using the AIM service on the desktop will see the graphic for the smiley you selected.

Receive a new message

When you receive a new instant message, you'll be alerted with a message, and a tone or vibration (as defined for your phone). Typically, a message appears on your phone display alerting you that you have a new message. This notification message will provide instructions for how you can view your new instant message.

When you receive a message from someone who is not saved in your Buddy List feature, you are first asked to **Accept** or **Reject** this message. If you reject the message, all further messages from this user will be declined until you send them a message or re-accept them.

If you receive a new message alert while typing another message, press the **Clear** or **Back** key to finish composing your message. Then, after you've sent your message, press the **MENU** softkey and then select **Get New/Update Msgs** to see the new instant message.

Reply to a message

To reply to an instant message, complete the following steps:

1. Select the screen name in the Conversations list and press the **VIEW** softkey.
2. Press the **REPLY** softkey to type a message, or select **Quick Reply** and press the **QUICK** softkey to use a predefined message.

See "Using Quick Replies" [on page 11](#) for information on using Quick Replies.

3. Enter the message and press the **SEND** softkey.

Your message is saved on the Previous Messages screen when you send or receive the next message or otherwise update the conversation.

Manage conversations

Each time you send a message or update a conversation, the AIM service displays any new messages you have received. From the Message screen:

- If there are no new messages since the last time you updated the conversation, "No new messages in this conv." displays.
- If there are previous messages in the conversation, select **Previous Msgs** and press the **VIEW** softkey to display them.
- If there are new messages from other screen names, select **Other new messages** and press the **VIEW** softkey to display the Conversations list.

Press the **REPLY** softkey to type a response or select **Quick Reply** and press the **QUICK** softkey to use smileys, simple greetings, and common phrases.

If you receive a new message alert while typing another message, press the **Clear** or **Back** key to finish composing your message. Then, after you've sent your message, press the **MENU** softkey and select **Get New/Update Msgs** to see the new instant message.

View your messages

The New Message screen includes the **Previous Messages** link. Select this link to display the Previous Messages screen. This screen displays as much of the preceding conversation as possible in the available screen memory. Use the navigation keys to scroll through the screen.

To return to the Message screen, select **Latest msgs** and press the **VIEW** softkey. To get new messages in the conversation, select **Get New Messages** and press the **VIEW** softkey.

View other new messages

When you have several conversations going at once, select **Other new msgs** and press the **VIEW** softkey to update and display the main AIM screen.

The asterisk (*) indicates which screen names have sent you new messages.

Reject messages

To reject messages from a screen name on your Buddy List, complete the following steps:

1. Select the screen name on the main AIM screen and press the **MENU** softkey.
2. Select **Reject Msgs from** and press the **OK** softkey.
3. At the confirmation message, press the **REJECT** softkey to reject all messages from this screen name until you sign off the AIM service, or the **CANCL** softkey to return to the main AIM screen.

If you receive a message from someone who is not saved in your Buddy List feature, you are first asked to **Accept** or **Reject** this message. Select **Reject** to decline all further messages from this screen name until you send them a message or re-accept them.

See "Rejecting Messages" [on page 13](#) for more information about rejecting messages from AIM users.

End the conversation

To end a conversation, press the **MENU** softkey, select **End Conversation**, and then press the **OK** softkey. This clears all previous messages in the conversation and updates the screen name's status.

Rejecting Messages

The AIM service lets you control who can contact you. You can choose to decline further messages from a screen name during the current session. The user will be able to send you messages again the next time you sign on.

You can also use the AOL, AIM, or AIM Express service on your computer to permanently block the screen name from sending you messages on any AIM service you are using.

A rejected buddy will be displayed with an **X** next to their screen name in the Online Buddies or Offline Buddies list on your phone. A blocked screen name will never be displayed as an Online Buddy on your phone.

Reject messages from an AIM user in your Buddy List feature

You can prevent someone from contacting you by rejecting messages from that user by completing the following steps:

1. Select the screen name on the main AIM screen and press the **MENU** softkey.
2. Select **Reject Msgs from** and press the **OK** softkey.
3. Press the **REJCT** softkey to reject all messages from the screen name, or press the **CANCL** softkey to cancel the procedure.

After the user is rejected, an **X** appears next to their screen name in the Buddy List.

Accept messages from a rejected AIM user

After a user has been rejected, you can accept them and begin to receive their messages again by completing the following steps:

1. Select the screen name on the main AIM screen and press the **MENU** softkey.
2. Select **Accept Msgs from** and press the **OK** softkey.
3. Press the **YES** softkey to begin accepting messages from the screen name, or press the **NO** softkey to cancel the procedure.

The screen name's status is updated in the main AIM screen.

Note: A rejected screen name is automatically re-accepted when you send them a new message.

Setting Alerts

You can set alerts so that you receive a message when a particular buddy comes online. The type of alert you receive depends on your phone and its settings. The alert expires when your friend comes online or when you sign off the AIM service.

The type of alert you receive depends on your phone's alert settings—the alert could be an audio tone and/or a vibration. These alerts must be enabled using the setup options for the phone. They cannot be changed using the AIM service. The AIM service only takes advantage of their availability on the phone. See your phone's user guide for more information on setting alerts.

Buddy alerts

To get notified when a friend, family member, or co-worker you want to contact signs on, complete the following steps:

1. Select the screen name on the main AIM screen and press the **MENU** softkey.
2. Select **Set Alert** and press the **OK** softkey.
3. At the Confirmation message, press the **YES** softkey to set the alert, or the **NO** softkey to cancel the action.

After the alert is set, when the screen name comes online, the AIM service generates an alert and lists the screen name in the Conversations list.

Alerts are set separately for each screen name in your Buddy List feature, and you can temporarily disable all alerts by changing your status to "Away."

Message alerts

When you receive a new instant message, you'll be alerted with either an audio tone and/or vibration. Your phone may also display the alert message, "Message from AIM. View or Skip?"

To display the new message, press the **VIEW** softkey. On some phones, you may have to select the new message from the Conversations list. If you are writing a message when this alert arrives, press **SKIP** to prevent losing what you've typed. If you are displaying the conversation when this alert arrives, the new message may appear under **Previous Msgs**.

Disable alerts

When you set your status to "Away (Do Not Disturb)," these alerts are temporarily disabled, and other AIM users will see an "Away" icon next to your name in their list of available buddies. If they send you a message, they will receive a message that you are currently unavailable. When your status is "Away," you still receive all messages that are sent to you.

To change your status to Away, complete the following steps:

1. From the main AIM screen, press the **MENU** softkey.
2. Select **AIM Options** and press the **OK** softkey.
3. Select **Set My Status To Away** and press the **OK** softkey.
4. At the Confirmation message, press the **OK** softkey to change your status.

Changing Your Password

You are able to change the password associated with the screen name from your wireless device, even if the screen name is shared with an AOL account or other AIM clients. Changing this password affects all AIM logins with the same screen name.

If you change the password for your screen name using your phone, the new password will immediately work with the AIM and AIM Express service. The new password will not work with your AOL account, which will still require your old password—you will have to separately change the saved password for the AOL service on your computer.

Note: The following procedure is provided for your convenience. However, it is not recommended that you change your password from your phone in order to avoid potential problems signing on to the AOL service and other versions of the AIM service.

To change your AIM password using your phone, complete the following steps:

1. From the main AIM screen, press the **MENU** softkey.
2. Select **AIM Options** and press the **OK** softkey.
3. Select **Change Password** and press the **OK** softkey.
4. Type your current password, and then re-type the new password to confirm.
5. Press the **OK** softkey.
6. The AIM service displays a message to confirm that your password has changed. Press the **OK** softkey to continue.

Using T9 Text Input to Type Messages

T9 Text Input (also known as Predictive Text Input or iTap) is a predictive text input method and a quicker way to write text. For typing messages, T9 Text Input is twice as fast as multi-tapping, and is the easiest way to type text using the limited keypad on a wireless phone.



- Just one key press per letter with no multi-tapping
- Extensive word database including proper names
- Ability to add words to the T9 Text Input database
- Available in many languages
- Full punctuation and symbol capabilities

How T9 Text Input works

By using the letters grouped on each of the phone keys and a highly compressed database, T9 software requires just one key press per letter, and quickly recognizes the most commonly used word of a key sequence.

For example, to enter the word "how," you can spell out the word by pressing only three keys, 4-6-9. T9 Text Input knows that the most commonly used word with that numeric sequence is "how." If more than one word shares the same numeric sequence, T9 software provides the most commonly used word, with the ability to scroll to the next most commonly used word by pressing the **0** key.



See your phone's documentation for information on how to turn T9 Text Input on and off.

Enter letters using T9 Text Input

From any text entry field (for example, if you are entering your screen name or writing a new instant message):

1. Use one key press per letter. For example, if you want to write the word "Hello", you would press the **4, 3, 5, 5, 6** keys.
2. A word displays. If the word shown is the one you want:

- Press the **1** key to accept the word and add a space.

If the word shown is not the one you want:

- Press the **0** key repeatedly to view alternative words. Accept a word and add a space by pressing the **1** key.

If you do not find the word you want by pressing the **0** key:

- Add the word to the T9 dictionary. See your phone's documentation for information on how to add words to the T9 dictionary.

Use multi-tap text input

Unlike T9 Text Input, where you only enter one key press per letter, multi-tapping requires multiple key presses per letter (for example, press the **6** key three times to get the letter "o").

To enter the letter "s", for example, press the **7** key four times; to enter the letter "x", press the **9** key twice. Don't be afraid to experiment. To correct errors, press the **Clear** key. If successive letters employ the same key, pause a moment or two until the cursor moves to the right.

For example, to type "hello," you press the following keys:

- **4-4** for "h"
- **3-3** for "e"
- **5-5-5** for "l"
- **5-5-5** for "l"
- **6-6-6** for "o"

To enter a number, you must first cycle through all the letters represented by a key. For example, pressing the **2**-key four times will display the number "2."

For basic symbols such as a period, keep pressing the **1** key until the symbol you want is displayed.

Troubleshooting

This section describes common questions and problems. If your question is not answered here, refer to the AIM Wireless Web site at www.aol.com/aim/wireless.

Problems signing on to the AIM service

If you are having problems signing on to the AIM service, consider the following:

- Your AIM password is case-sensitive. Double-check to make sure that you are not accidentally typing the wrong case for your password.
- Make sure that you are using the correct password. If you use both the AOL and AIM service, you might have two passwords for the same screen name (an AOL password and an AIM password). You must use the AIM password to sign on to the AIM service from your phone.

Problems receiving messages

If you are signed on to AIM service but are not receiving messages, try the following:

- Make sure that you are not signed on to both the AOL and AIM services using the same screen name. If this is the case, your messages go to the AOL service by default. To receive messages on your phone, sign off the AOL service.
- Wait a few minutes. Your messages may be delayed due to a low signal or carrier network problems.
- If you haven't received any new message alerts, try signing off the AIM service and then signing on again. This will alert your friends (who have your screen name on their Buddy List) that you are online and available for messages.

How do I get notified when an instant message arrives?

Each time an instant message is received, the AIM client generates an alert. Depending on your phone settings, the handset may generate an audio tone or vibrate. Your phone may also display "Message from AIM" and offer a function key to jump directly to the main AIM screen.

Every time that I'm typing a message and a new message arrives, I lose the message that I'm writing. How can I finish my message before reading the new one?

When you receive a new instant message, you're alerted with a message, along with a tone and/or vibration. If you receive a new message while typing another message, press the **Clear** or **Back** key when you see the new message alert. This will take you back to the message you are writing. Then, after you've sent your message, press the **MENU** softkey and select **Get New/Update Msgs** to see the new instant message.

How do I get notified when a buddy goes online?

The easiest way to see when a screen name from your Buddy List feature has come online is to set an alert that will notify you when this happens. To do this, select the screen name who you want to set the alert for on the main AIM screen, press the **MENU** softkey, and then select **Set Alert**.

Once the alert is set, there will be an exclamation mark (!) next to the screen name in the Offline Buddies list on the main AIM screen.

What happens if my phone service is unavailable?

If your phone service is unavailable, you will not be able to send or receive any instant messages or perform any other AIM functions. If you are signed on, you will continue to be signed on to the AIM service and people can send you messages.

If you receive a "Network not available" message (or another similar message) when you try to send an instant message, you might be in a building or an area where you don't have a network connection to your carrier. Try changing your location to see if that improves your network connection.

My Away message doesn't stay set between sessions

This is normal behavior. For the AIM service on wireless phones, the Away message will only stay set for one session. If you sign off the AIM service, you will need to reset the Away message when you sign on again.

When I sign on to AIM from my phone, the Mobile Device icon doesn't appear on my friend's Buddy List

When you sign on to the AIM service from your phone, anyone who has your screen name in their Buddy List, and is using AIM version 4.8.2646+ or AOL version 7.0+, will see a Mobile Device icon appear next to your screen name both in their Buddy List window and in the Instant Messaging window.

If your friend does not see the Mobile Device icon, then they are probably using a version of the AOL or AIM service that does not support this feature.

